

SUSSEX

SEAMSTRESS

This Sample contains a few pages of an instruction manual as examples of content. It is not a full set of instructions for the dress.



PLUMPTON

PLUMPTON

The Plumpton is a practical, loose fit knee length dress with flattering princess seams, a square neckline and lovely big pockets.

Make up in a woven fabric with a bit of stretch for easy dressing. Use denim or wool for Autumn/Winter and pair with tights & boots. Make up in a Bengaline for Spring/Summer and wear with sandals and a card.

The dress is fitted at the bust and loose over the waist with no zips or fastenings. If you prefer a more fitted waistline you may need to add a zip to the side seam or use a fabric with more stretch so you can still get it over your shoulders.

SKILL LEVEL

Confident Beginner

FABRIC REQUIREMENTS

150cm width: 2.7m

115cm width: 3.5m (up to size 28 only)

SUGGESTED FABRICS

Woven fabric with a bit of stretch (approximately 2/3%), e.g. Bengaline, denim, wool, linen, cotton

NOTIONS

Interfacing (30cm x 1m wide), thread

UK SIZING (CM)

	6	8	10	12	14	16	18	20	22	24	26	28	30
BUST	80	84	88	92	96	100	104	110	116	122	128	134	140
WAIST	64	67	70	74	78	82	86	91	97	103	109	115	120
HIPS	90	93	96	99	102	106	110	115	120	125	130	135	140

APPROXIMATE FINISHED MEASUREMENTS (CM)

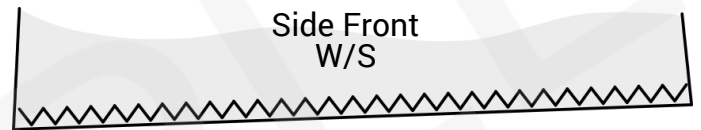
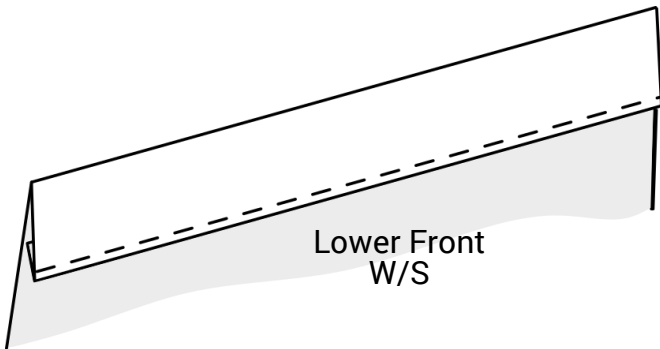
	6	8	10	12	14	16	18	20	22	24	26	28	30
Bust	80	84	88	93	98	105	112	119	125	132	139	146	154
Waist	70	74	76	80	86	90	96	102	114	120	126	130	140
Hips	92	96	98	102	106	110	115	122	126	132	140	147	157
Back Neck to Hem	96	97	98	99	100	101	102	102.5	103	104	105	106	107
Sleeve Length	25	26	27	28	28.5	29	30	31	31.5	32	32.5	33	34
Bicep	31	32	34	35	36	38	40	42	44	45	49	52	55

ONLINE TUTORIAL VIDEO

We have produced a tutorial video that takes you through the construction steps of this garment on our YouTube channel. A link to the video can be found on the Plumpton Dress product page at www.sussexseamstress.com, or you can scan the adjacent QR code on a mobile device. The video is split into chapters so you can jump straight to any construction step.

SEAM ALLOWANCE

A seam allowance of 1cm is included for all seams unless otherwise stated.

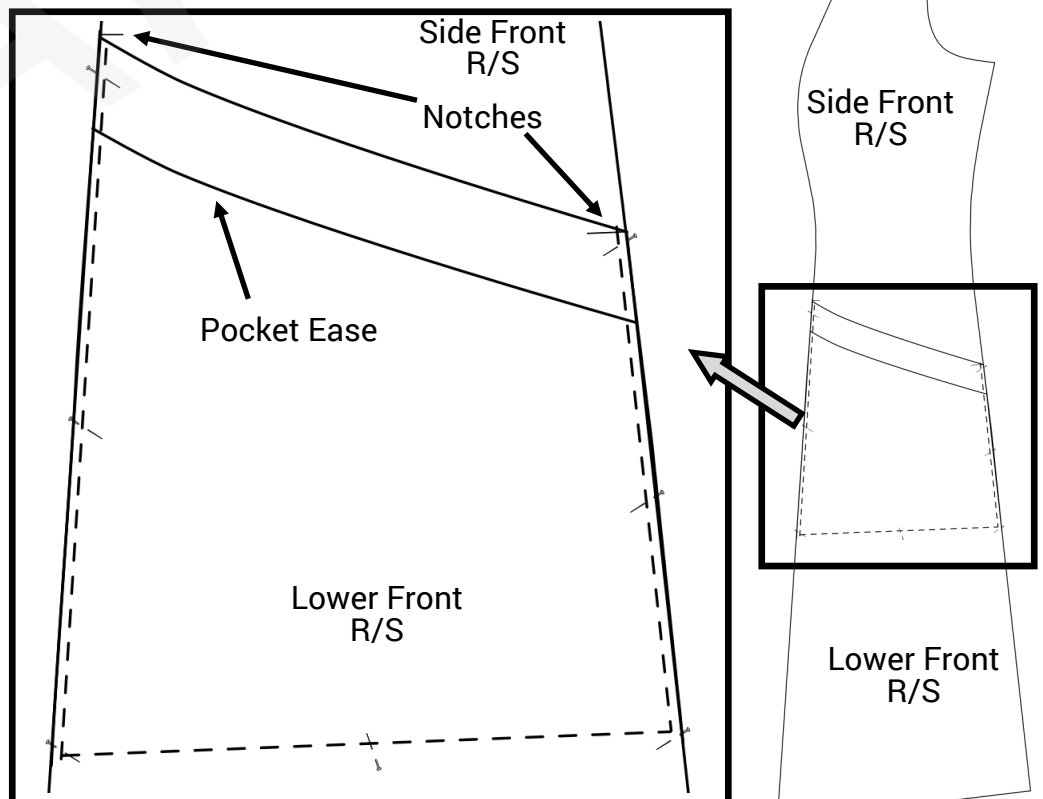


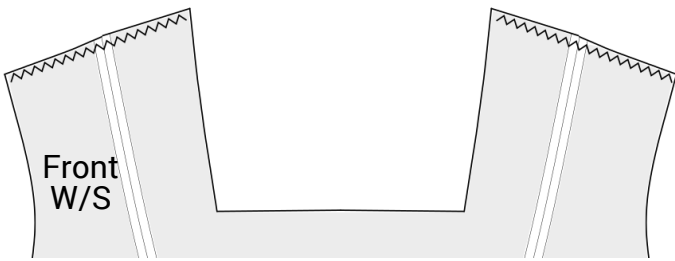
1. Fold the top of the **lower front** panels over by 1cm and press, then fold over by another 2cm and press. The short sides of the folds should lay flush with the sides of the lower front panel. Stitch.

2. Overlock or zigzag stitch the lower edge of the **side front** panels.

3. Lay the **lower front** panels on top of the **side front** panels, right sides up, matching notches. There is some ease in the pocket to allow you to get your hand in comfortably, so ensure the edges of the lower front are aligned with the edges of the side front panel.

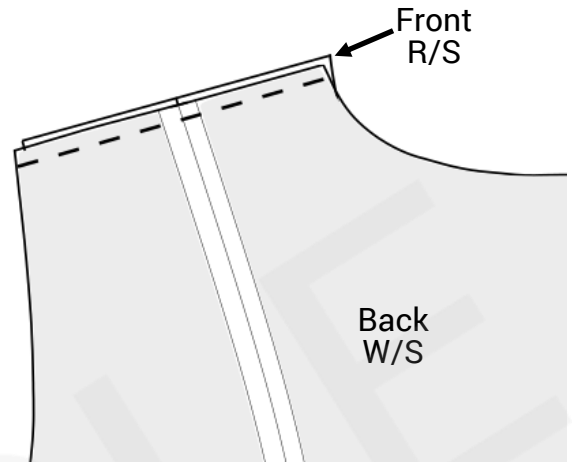
On the **wrong side**, stitch together within the 1cm seam allowance, as shown.



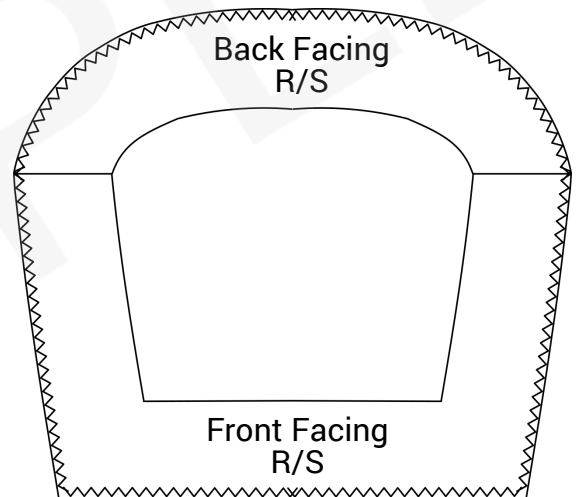
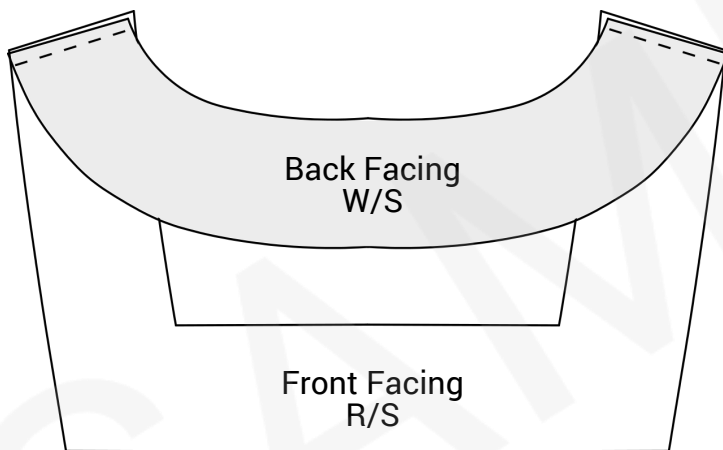


8. Overlock / zigzag the front & back shoulders.

9. Pin back shoulders to front shoulders, matching seams, right sides together. Stitch. Press seams open.

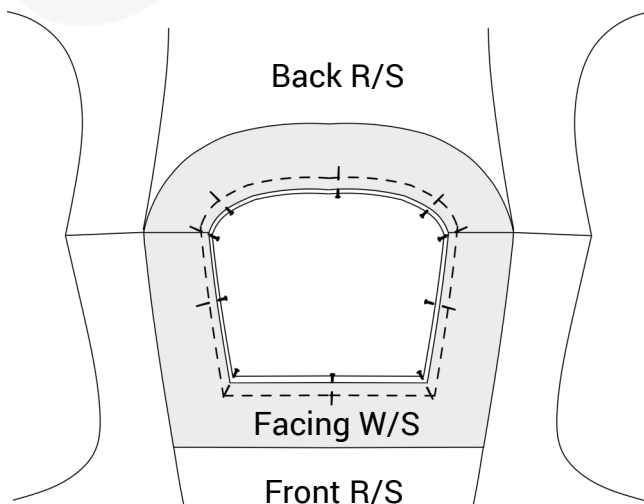


10. Iron interfacing onto wrong side of facing pieces.



11. Pin & stitch back interfacing to front interfacing, right sides together. Press seams open.

12. Overlock / zigzag around the outside edge of the facing.

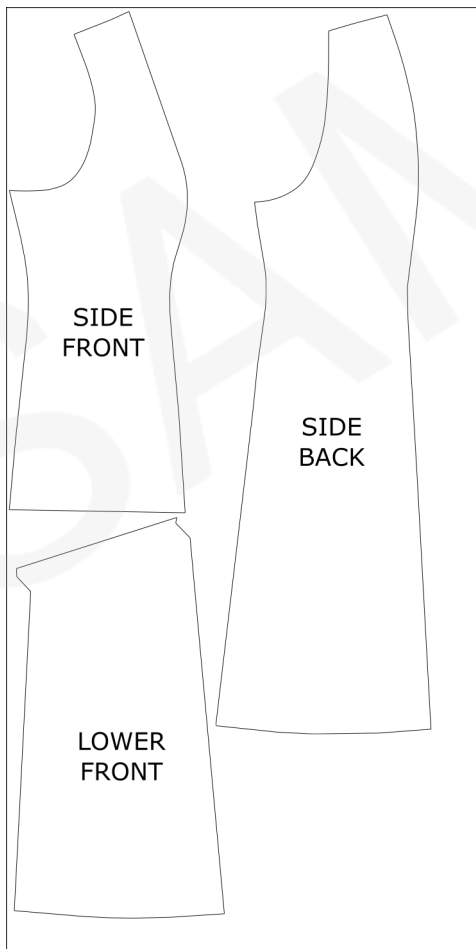
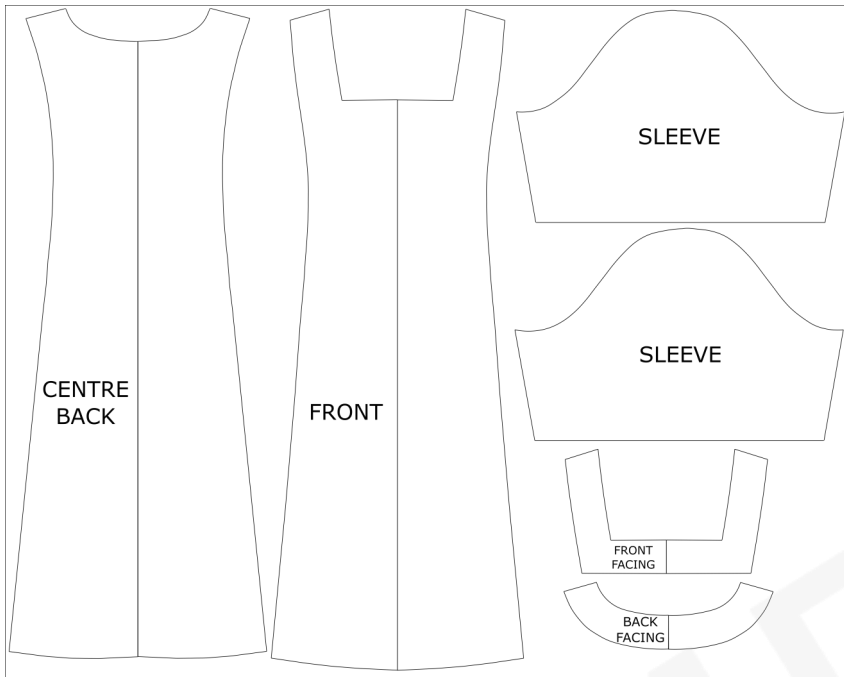


13. Pin facing to neckline, matching shoulder seams, right sides together. Stitch.

SUGGESTED CUTTING LAYOUT

150cm width fabric

(Size 30 shown)



115cm width fabric

(Size 28 shown)

